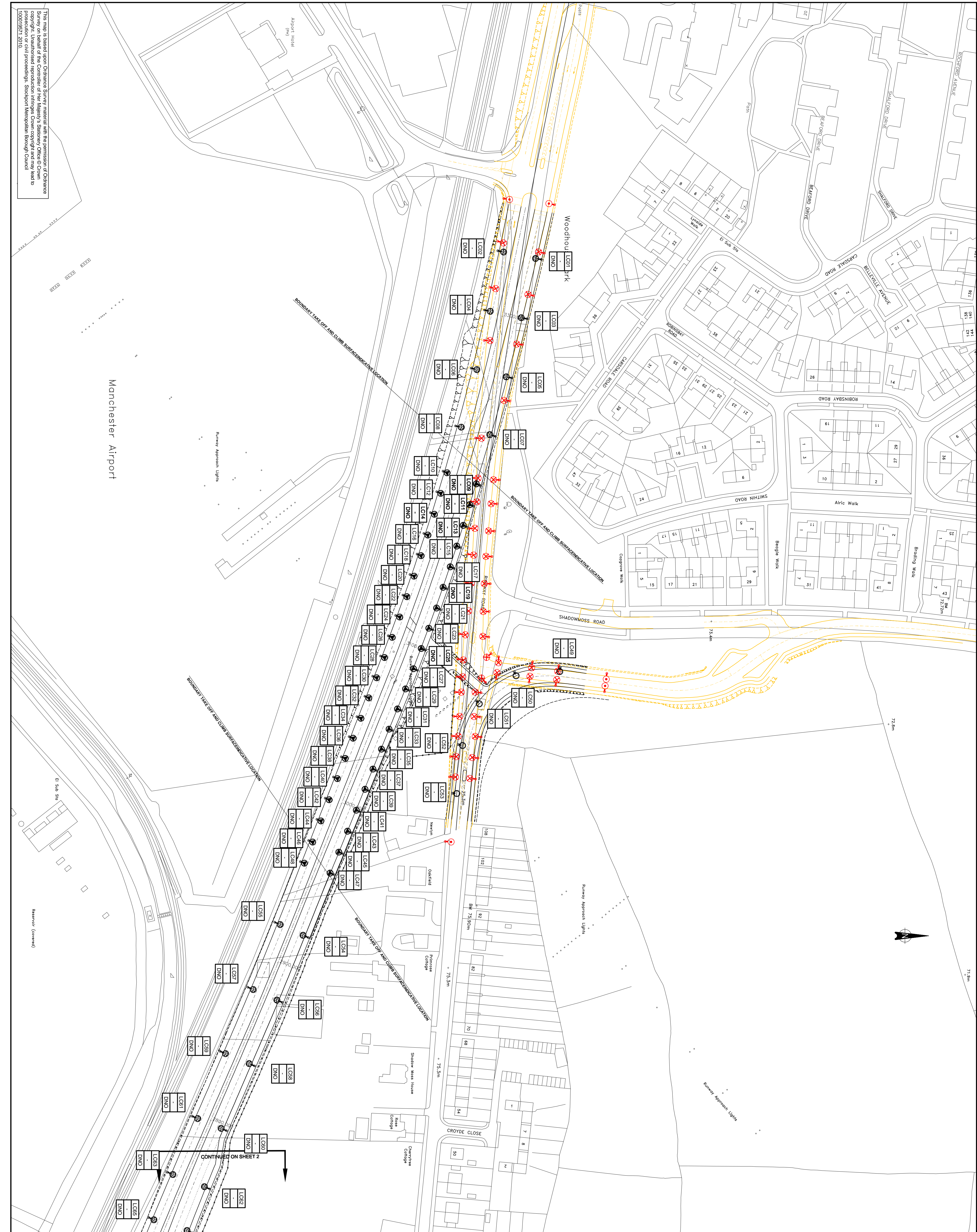


This map is based upon Ordnance Survey material with the permission of Ordnance Survey on behalf of the Controller of Her Majesty's Stationery Office © Crown copyright. Unauthorised reproduction infringes Crown copyright and may lead to prosecution or proceedings. Stockport Metropolitan Borough Council 10001957/1 2010.



- NOTES**
1. ALL DIMENSIONS ARE IN MILLIMETRES
  2. UNLESS STATED OTHERWISE THIS DRAWING SHOULD BE READ IN CONJUNCTION WITH DRAWING NO. 60248122\_0001\_001 & 003/010
  3. LOCATIONS OF EXISTING COLUMNS DESIGN STAGE AND SUBJECT TO SITE CONFIRMATION.
  4. ANY LIGHTING TO REMAIN OUTSIDE OF WORKS AREA WILL NEED TO REMAIN IN LIGHTING AND MAY REQUIRE PRIVATE SERVICE DIVERSION WORKS.

- LEGEND**
- PROPOSED 5m MOUNTING HEIGHT MALLATTE, GALVANISED STEEL, PLANTED LIGHTING COLUMN WITH POST TOP MOUNTED PHILIPS IRIDIUM SGG253 LANTERN WITH 50 WATT SONT-P PLUS PIA LAMP, PHILIPS PRIMAVISION ELECTRONIC BALLAST AND NEMA SOCKET FOR ZODION SS8 PHOTOCELL.
  - OPTIC: OR
  - LAMP POSITION: FSX
  - PROTECTOR: FLAT GLASS
  - LUMINAIRE TILT: 5°

- PROPOSED 5m MOUNTING HEIGHT MALLATTE, GALVANISED STEEL, PLANTED LIGHTING COLUMN WITH POST TOP MOUNTED PHILIPS IRIDIUM SGG253 LANTERN WITH 70 WATT SONT-P PLUS PIA LAMP, PHILIPS PRIMAVISION ELECTRONIC BALLAST AND NEMA SOCKET FOR ZODION SS8 PHOTOCELL.
- OPTIC: CR
- LAMP POSITION: P1
- PROTECTOR: FLAT GLASS
- LUMINAIRE TILT: 5°

- PROPOSED 10m MOUNTING HEIGHT MALLATTE, GALVANISED STEEL, PLANTED LIGHTING COLUMN WITH 1m OUTREACH BROUKE SS54 LANTERN AND 150 WATT SONT-P PLUS PIA LAMP, PHILIPS PRIMAVISION ELECTRONIC BALLAST AND NEMA SOCKET FOR ZODION SS8 PHOTOCELL.
- OPTIC: CP
- LAMP POSITION: P7
- PROTECTOR: FLAT GLASS
- LUMINAIRE TILT: IN LINE WITH BRACKET.

- EXISTING COLUMN TO BE REMAIN
- EXISTING COLUMN TO BE REMOVED FROM SITE AND PUT INTO STORAGE
- LC01 LIGHTING COLUMN IDENTIFICATION
- DNO TERMINATION TYPE
- DNO CABLE NETWORK TYPE (DISTRIBUTION NETWORK OPERATOR)

Rev	Date	Drawn	Checked	Issue	Code	Notes
A	02.03.12	ISSUED FOR APPROVAL	NW	JL	CE	
B	19.04.12	ISSUED FOR APPROVAL	NW	JL	CE	
C	12.12.12	ISSUED FOR APPROVAL	NW	JL	CE	
D	30.08.13	ISSUED FOR APPROVAL	WD	NW	JL	

Client: **semms** Stockport Metropolitan Borough Council

Project: **SEMMS RELIEF ROAD SCHEME A6 - AIRPORT**

Title: **PROPOSED LIGHTING RINGWAY ROAD WEST JUNCTION SHEET 1 of 9**

Design: JL CAD: NW

Check: PK Appr: CE

Date: February 2012 Scale: 1:1000

**AECOM**

Staley House  
4 Barber Park,  
Crofton, Salford, M6 2AP

Tel: +44 (0)20 8693 3500  
Fax: +44 (0)20 8693 5599  
www.aecom.com

No. 60248122\_1300\_002

Rev: D